



**TELECOM OPERATORS  
GROUND SEGMENT  
MARKET LEADERSHIP**



**ANY MISSION  
LEO/MEO/GEO/HEO**



**FROM ONE SATELLITE TO  
MASSIVE FLEETS**



**DAILY MONITORING FOCUS ON  
SAFETY**



**WE FIT TO CUSTOMER NEEDS**



**HALF OF THE TOP SATELLITE  
OPERATORS COUNT  
ON OUR PRODUCTCS**

**Focusoc TEAM**



# Focusoc

A product by:



**For more information about Focusoc services:**  
[marketing-GMV-AD@gmv.com](mailto:marketing-GMV-AD@gmv.com)

Product Info at:  
[www.gmv.com/en/Products/focussuite](http://www.gmv.com/en/Products/focussuite)

# Focusoc

**Focus operations  
centre for collision  
avoidance**



## What is Focusoc?

GMV's **Focusoc** operations center provides safety of flight services based on the augmentation of the services currently provided by the 18SPCS (formerly JSpOC) as per a dedicated SSA Data Sharing Agreement signed in Q1 2017 between USSTRATCOM and GMV.

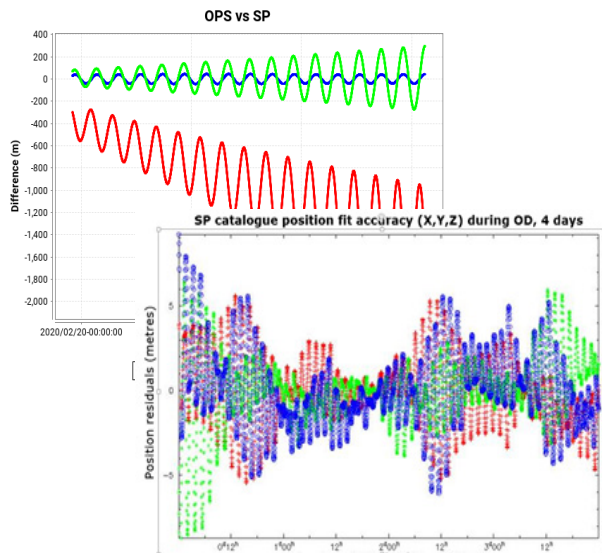
Conjunction Assessment (CA) & Collision Avoidance (COLA) services overcoming issues identified on the free-of-charge services from the 18SPCS:

- Use of GMV's operational **Focuscloseap** tool with O/O operational orbits provided and the 18SPCS SP catalogue, as a tool or as a service.
- Simplification of iterative process for COLA manoeuvre planning by avoiding having the 18SPCS in the loop for all screenings. **Automated** regular screenings against operational orbits, including SK and COLA manoeuvres.
- **18SPCS SP catalogue** is downloaded and **propagated** to extend its validity up to 2 weeks in order to anticipate upcoming CDMs, reducing urgency of operations.
- If needed, **data collection** for orbit refinement and risk reassessment from a large set of collaborating telescopes worldwide.

## SP catalogue accuracy check

GMV's **accuracy checks** on the SP catalogue

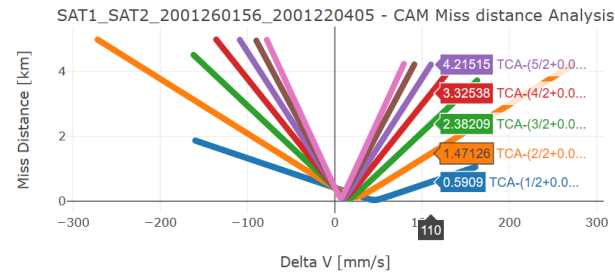
- Collection of optical data for GEO and POD data from **EU/ESA/EUMETSAT's Sentinel satellites** for LEO.
- Excellent OD solutions
- Main errors in along-track direction, low radial errors



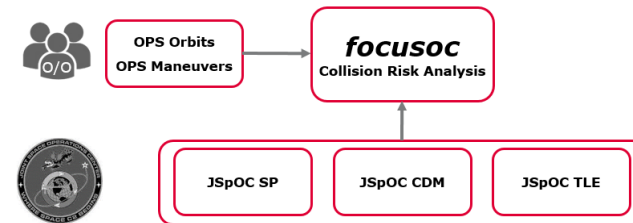
## Focuscloseap FOR CA & COLA

**Focuscloseap** provided with the service, is GMV's operational COTS collision risk assessment tool part of GMV's **Focussuite** Flight Dynamics solution already present in a large number of telecom operators.

- **Focuscloseap** performs all Conjunction Analysis operations for your fleet
- Includes middle-man processing (CDM handling)
- Generation of detailed plots for expert analysis
- Collision Avoidance Manoeuvre (CAM) assessment



- Multiple sources of orbital information:



- Generation of internal CDMs and summary reports

## CONJUNCTION DETECTION REPORT

Execution Time : 2018/02/06-01:11:12.226  
 Report Interval Start : 2018/02/06-00:00:00.000  
 Report Interval End : 2018/02/20-00:00:00.000  
 Number of detected conjunctions : 9 Conjunctions

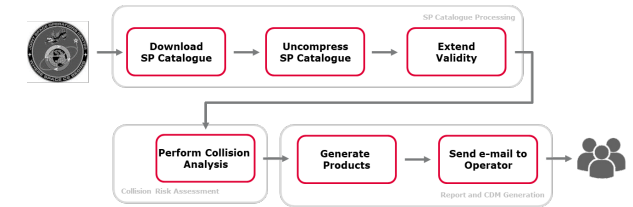
High risk conjunctions are marked in red :

Id	Target	Chaser	Target Src/Age	Chaser Src/Age	TCA	Miss Dist (km)	Collision Prob	Max Collision Prob	Rad Dist (km)	Along Dist (km)	Cross Dist (km)	High Risk
511	SAT1	AMOS 5	OPS/ 0.0	CAT/ 0.0	2018/02/12-21:01:05	17.924	0.000E+000	2.700E-005	-7.575	-16.177	1.478	
512	SAT2	ARIANE 5 R/B	OPS/ 2.0	CAT/ 0.0	2018/02/12-21:38:27	35.286	0.000E+000	1.375E-005	16.988	-30.725	2.617	
513	SAT2	COSMOS 2085	OPS/ 2.0	CAT/ 0.0	2018/02/13-08:01:24	8.517	0.000E+000	5.682E-005	8.095	-2.625	-0.346	X
514	SAT3	GORIZONT 22	OPS/ 2.3	CAT/ 0.0	2018/02/13-08:58:13	40.326	0.000E+000	1.200E-005	-3.067	40.039	3.697	
515	SAT4	COSMOS 2085	OPS/ 5.0	CAT/ 0.0	2018/02/13-19:59:23	4.952	0.000E+000	9.773E-005	-4.429	2.196	-0.288	X
516	SAT4	COSMOS 2085	OPS/ 5.0	CAT/ 0.0	2018/02/14-07:57:26	21.462	0.000E+000	2.255E-005	8.197	-19.663	-2.610	
517	SAT5	RAUGA 21	OPS/ 0.0	CAT/ 0.0	2018/02/17-13:58:50	6.652	0.000E+000	7.275E-005	-3.794	-5.425	-0.660	X
518	SAT6	RAUGA 17	OPS/ 3.6	CAT/ 0.0	2018/02/17-13:59:34	41.842	0.000E+000	1.157E-005	-34.021	-24.212	-2.665	
519	SAT7	ARIANE 44LP R/B	OPS/ 2.9	CAT/ 0.0	2018/02/18-10:54:44	25.055	0.000E+000	1.932E-005	-3.795	-24.586	-2.980	

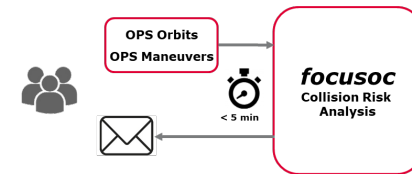
## Focusoc key features

**Cost-effective solution** based on the exploitation of the precise 18SPCS SP catalogue

**Automated execution** as soon as new fresh SP catalogue is available, in order to have frequent updates of the situational awareness of the satellites



**Short latency** on Demand Analysis when required by the user, **Focusoc** provides immediate evolution of the risk of a given conjunction event



**Expert support** on a daily basis (e-mail and phone) by a dedicated team with a wide experience in Space Surveillance and Tracking, and Flight Dynamics

**Collision risk assessment and warning** including the submission of high risk conjunction and CDM

**Characterization** of close-conjunction events, including the computation of the collision probability.

**Conjunction analysis process storage** of results in the data-store, accessible through ftp

**Analyses high-interest events** by means of dedicated tracking campaign (on demand) and collision avoidance manoeuvres performance analysis

**Sensors networks** the solution proposed by GMV for the refinement of high risk conjunctions is based on the availability of a varying and flexible number of third party telescopes and radar data providers

**Secure FTP** is used within **Focusoc** so that users can upload orbit ephemeris to the service in a dedicated private account. GMV's FTP server uses SSL/TLS secure connection protocol to ensure the privacy of each operator's data.